

# Hylas 2 – freedomsat Pointing Guide



Satellite Internet  
Solutions  
<http://www.wafa.ae>

Make sure the Modem is configured with the details sent to you before trying to find the satellite.

If you have internet connectivity; browse to <http://www.wafa.ae/vsat/Support/InstallersTools.aspx>  
And click on “Dish Alignment”

If you do not have internet connectivity, contact support with your location and we will do this for you.



Select the **Hylas 2** Option from the drop down menu



Once you have located your location on the map, click on it.

#### Instructions<

- Choose the satellite you wish to aim for
- Input the location of the antenna
- Click "Go!" to calculate approximate pointing angles

#### Notes on Location

The location box will accept either address information or latitude/longitude coordinates.

Such coordinates may be entered in either decimal or "degrees, minutes, seconds" format.

Positive values will represent North and East, whilst negative values will represent South and West.

For example, the coordinates <51° 28' 43.64" North, 0° 0' 38.44" West> should be entered as: 51 28 43.64 -0 0 38.44

#### Instructions<

- Choose the satellite you wish to aim for
- Input the location of the antenna
- Click "Go!" to calculate approximate pointing angles

#### Notes on Location

The location box will accept either address information or latitude/longitude coordinates.

Such coordinates may be entered in either decimal or "degrees, minutes, seconds" format.

Positive values will represent North and East, whilst negative values will represent South and West.

For example, the coordinates <51° 28' 43.64" North, 0° 0' 38.44" West> should be entered as: 51 28 43.64 -0 0 38.44

**Instructions**

- Choose the satellite you wish to aim for
- Input the location of the antenna
- Click "Go!" to calculate approximate pointing angles

**Notes on Location**

The location box will accept either address information or latitude/longitude coordinates. Such coordinates may be entered in either decimal or "degrees, minutes, seconds" format. Positive values will represent North and East, whilst negative values will represent South and West. For example, the coordinates <math>51^{\circ} 28' 43.64''</math> North,  $0^{\circ} 0' 38.44''</math> West> should be entered as: 51 28-43.64 -0 0 38.44$

**Wafa Dish Pointing Utility**

Satellite: Hylas 2 Location: Afghanistan

This will display the azimuth and elevation to set on your dish to start looking for the satellite.

Once the azimuth and elevation is set browse to <http://192.168.0.1/fs/advanced/advanced.html>

**Advanced Configuration and Statistics**

SIN: 2187854 Fallback bin: [6.5.0.33\_PID] Home Restart: HN9200

Enable Auto Refresh:  Interval (sec):

**Satellite Statistics Summary**

Network Time: THU JUN 28 22:04:59 2001

Adapter: Main Statistics:

Signal Strength.....	15	Stream Msg-Ackd/Bakd.....	0/0
Flags.....	0x00000000	NonStream Msg-Ackd/Bakd.....	0/0
Stream Error Rate.....	0.00%	NonStream Error Rate.....	0.00%
UpTime (d:h:m:s).....	000:00:14:34	Alpha Starts.....	0
Wakeup Alpha Starts.....	0	Ranging Starts.....	0
Transport Alarm Bit.....	0x0000	Frames Received.....	0
Addresses Open.....	4	Frame Errors: CRC/Bad Key... 0/0	
Carrier Info.....	000:E:00000	Miscellaneous Problems.....	1
Rate Code.....	256k 1/2 (TC)	No Receive Outroute Lock....	19422
Inroute Group.....	0	No FLL Lock.....	0
Inroute.....	-1	No Network Timing Sync.....	0
IQoS ID.....	0		

Ranging Reason: Ranging Done  
Inroute Group Selection: Ranged at inroute rate selected by IQoS

Receive Status: Receiver not locked to a signal. (RxCode 3)  
Transmit Status: Transmit cable is not connected. (TxCode 24)

Click Installation and then Setup

**Broadband Satellite Setup**

Welcome to Broadband Satellite Setup. Use the links below to register your HN9200 terminal or point the outdoor antenna. Please note that certain functions shall be disabled during this process. Make sure that your HN9200 terminal is restarted once you complete the Setup process.

[Registration - Installer](#) Use this option if you are an installer and are commissioning a new terminal.

[Registration - User](#) Use this option if you have a Registration Id and your antenna is already pointed.

[Registration - Adapter Swap](#) Use this option if you are replacing your existing terminal with a new terminal and your antenna is already pointed.

[Re-registration](#) Use this option if your terminal is already commissioned and you would like to update your account.

[\[Redacted\]](#) Use this option if you would like to run pointing or ACP on your current setup.

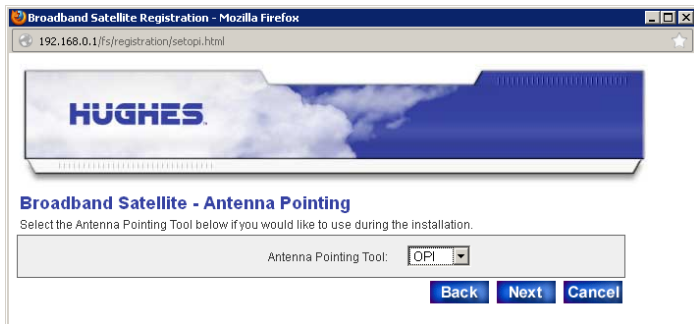
[VSAT Manual Commissioning](#) Use this option if you are an installer and would like to manually commission your terminal as a VSAT.

[License Management](#) Use this option to upload and manage feature licenses.

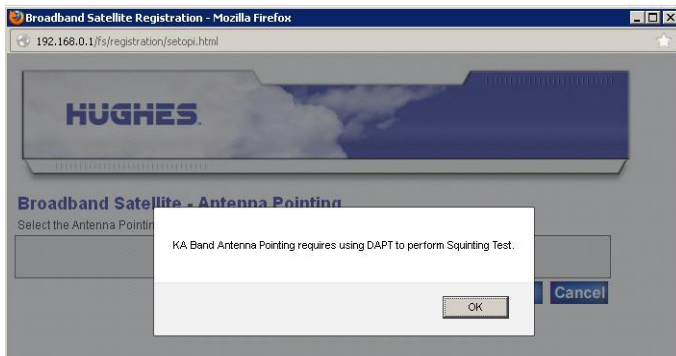
[Config File Upload](#) Use this option to upload a new registration configuration file.

[Zip Code File Upload](#) Use this option to upload a new Zip Code file.

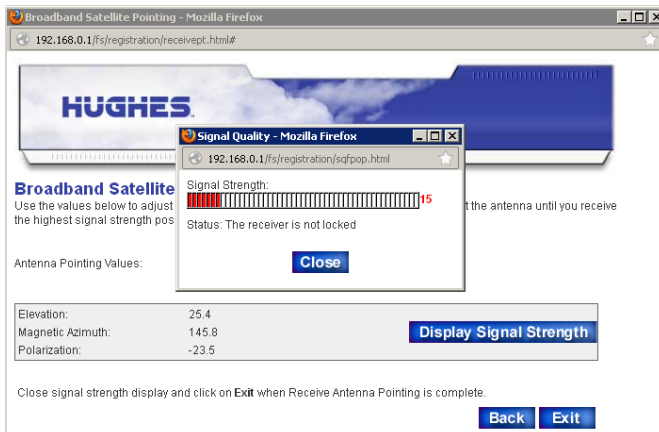
Click Antenna Pointing



Select OPI from the Drop down Menu



Click "OK"



This will display your signal strength; you will not obtain signal strength greater than 29 unless you are locked to the satellite. You may need to make adjustments to both azimuth and elevation until a signal is obtained.

Once it is locked you can fine tune the signal to achieve 92 or above.

---

## Support

Online Ticket System

<http://helpdesk.wafa.ae>

Wafa Support

[support@wafa.ae](mailto:support@wafa.ae)

Tel +971 2 334216

[www.wafa.ae/en/vsat/support.aspx](http://www.wafa.ae/en/vsat/support.aspx)

---